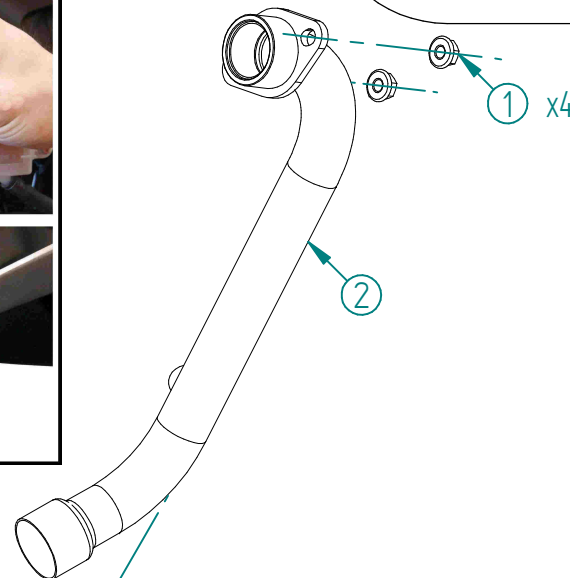
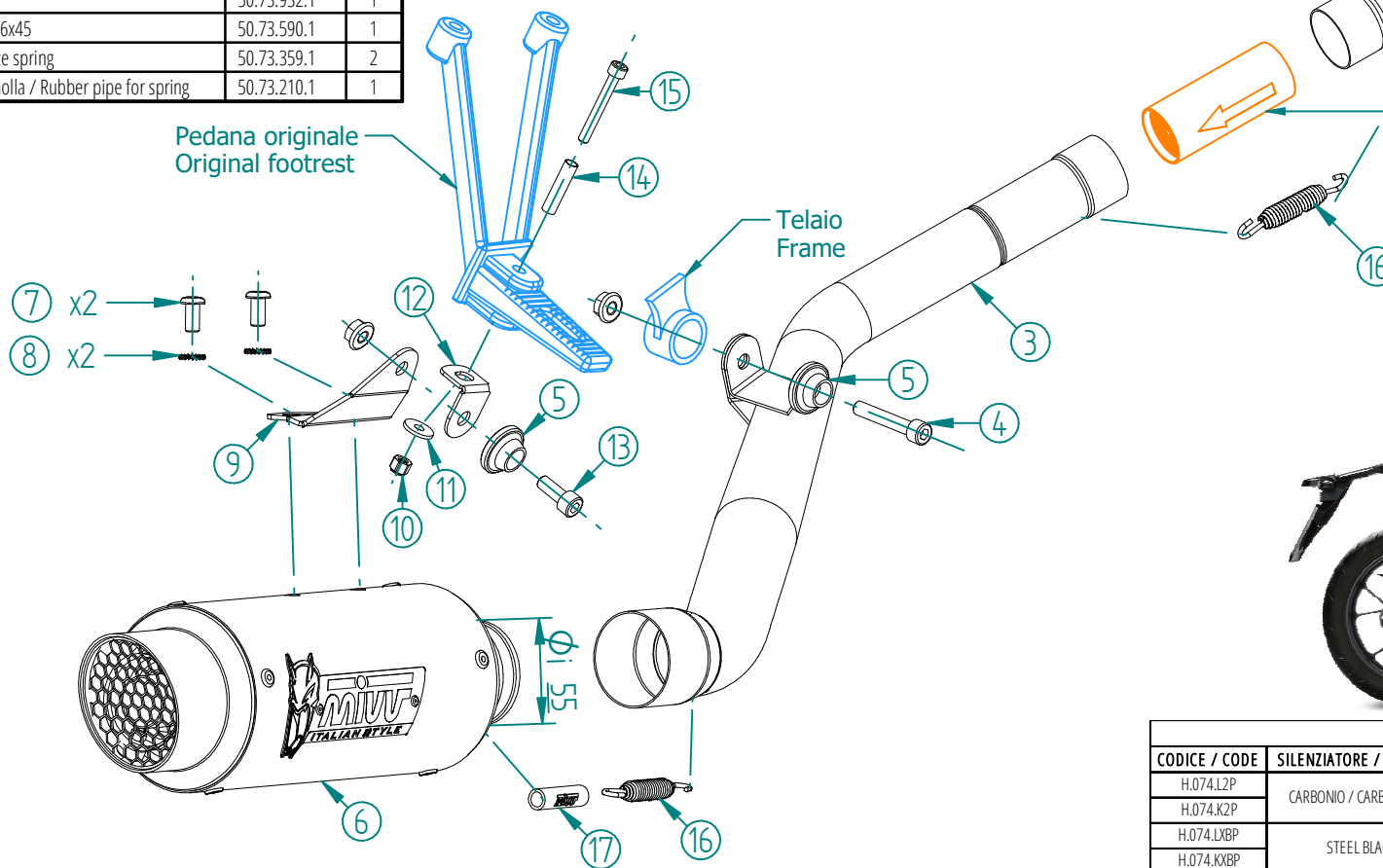
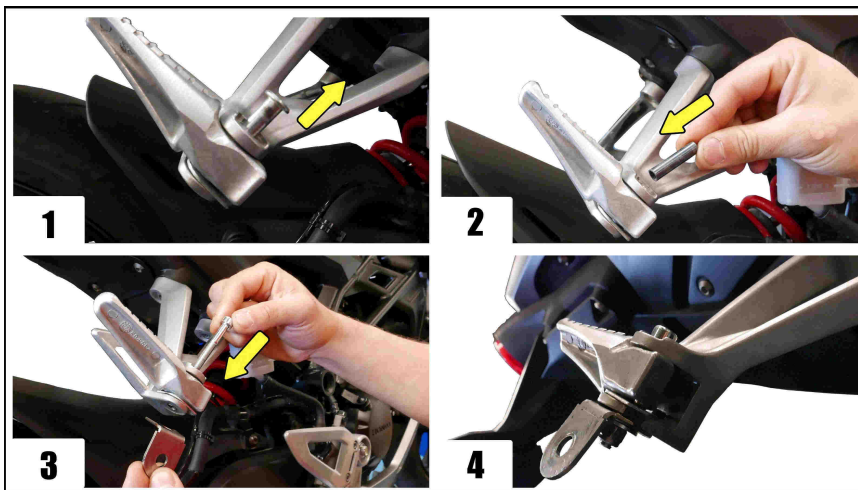


#	DESCRIPTION	PART NUMBER	QTY
1	Dado M8 flangiato / Flanged nut M8	50.73.393.1	4
2	Tubo collettore / Down pipe	9773H074S2A	1
3	Tubo di raccordo / Link pipe	9773H074S2B	1
4	Vite M8x45 / Screw M8x45	50.73.602.1	1
5	Rondella in alluminio nera / Black aluminium washer	50.73.221.1	2
6	Silenziatore / Muffler - dB killer 50.DK.129.0	GP PRO 220	1
7	Vite M8 x 16 / Screw M8 x 16	50.73.098.1	2
8	Rondella di sicurezza / Safety washer	50.73.604.1	2
9	Staffa / Bracket	50.SS.1214.0	1
10	Dado M6 autobloccante / M6 locknut	50.73.112.1	1
11	Rondella M6 / Washer M6	50.73.187.1	1
12	Staffa / Bracket	50.SS.1606.0	1
13	Vite M8x20 / Screw M8x20	50.73.894.1	1
14	Bussola / Bush	50.73.932.1	1
15	Vite M6x45 / Screw M6x45	50.73.590.1	1
16	Molla media / Mid-size spring	50.73.359.1	2
17	Tubo in gomma per molla / Rubber pipe for spring	50.73.210.1	



**Mandatory Catalytic Converter**  
Cod. ACC.073.A1

Optional in H.074.L2P - H.074.LXBP  
Included in H.074.K2P - H.074.KXBP



APPLICAZIONI / APPLICATIONS				
CODICE / CODE	SILENZIATORE / MUFFLER	LOGO	TUBO / PIPE	NOTE
H.074.L2P	CARBONIO / CARBON FIBER	ALUMINIUM LABEL	INOX / ST. STEEL	CATALYTIC CONVERTER NOT INCLUDED
H.074.K2P				CATALYTIC CONVERTER INCLUDED
H.074.LXBP	STEEL BLACK	LASER		CATALYTIC CONVERTER NOT INCLUDED
H.074.KXBP				CATALYTIC CONVERTER INCLUDED