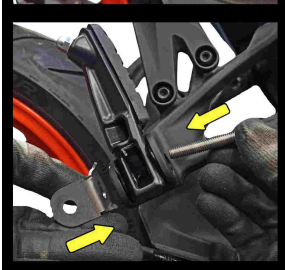
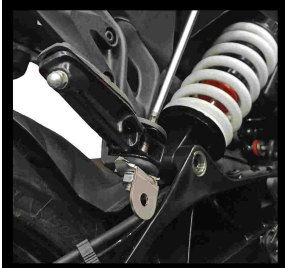




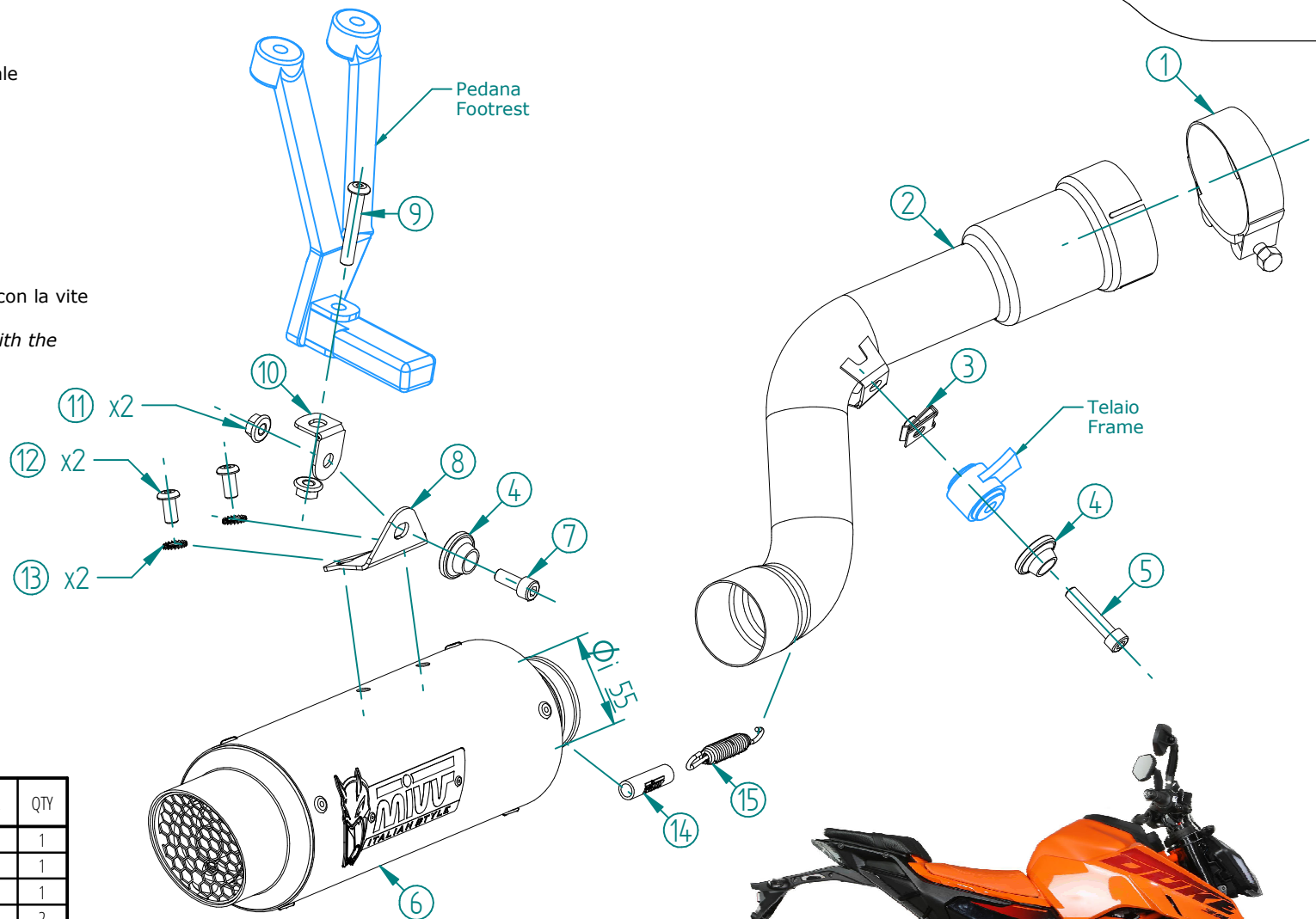
Rimuovere il perno originale
Removing the original pin



Montare la staffetta (10) con la vite e dado in dotazione.
Mount the bracket (10) with the supplied screw and nut.



Montaggio finale.
Final assembly



#	DESCRIPTION	PART NUMBER	QTY
1	Fascetta Ø 74/79 mm / Pipe clamp Ø 74/79 mm	50.FA.013.1	1
2	Tubo di raccordo / Link pipe	9773KT031S2	1
3	Dado rapido M8 / Cage nut M8	50.73.913.1	1
4	Rondella in alluminio nera / Black aluminium washer	50.73.221.1	2
5	Vite M8x40 / Screw M8x40	50.73.075.1	1
6	Silenziatore / Muffler db killer 50.DK.145.0	GP PRO 250	1
7	Vite M8x20 / Screw M8x20	50.73.894.1	1
8	Staffa / Bracket	50.SS.1053.0	1
9	Vite M8x50 / Screw M8x50	50.73.088.1	1
10	Staffa / Bracket	50.SS.1606.0	1
11	Dado M8 flangiato / Flanged nut M8	50.73.393.1	2
12	Vite M8 x 16 / Screw M8 x 16	50.73.098.1	2
13	Rondella di sicurezza / Safety washer	50.73.604.1	2
14	Tubo in gomma per molla / Rubber pipe for spring	50.73.210.1	1
15	Molla media / Mid-size spring	50.73.359.1	1

OPTIONAL PARTS

Tubo no kat - No kat pipe
Monta sia con silenziatori MIVV che con lo scarico originale
It fits both MIVV and genuine silencer



KT.025.C1
Duke 390



KT.025.C2
Duke 125



APPLICAZIONI / APPLICATIONS		
CODICE / CODE	SILENZIATORE / MUFFLER	TUBO / PIPE
KT.031.L2P	CARBONIO / CARBON FIBER	INOX / ST. STEEL