

#	DESCRIPTION	PART NUMBER	QTY
1	Collettore #1 / Down pipe #1	9773H096C1A	1
2	Collettore #2 / Down pipe #2	9773H096C1B	1
3	Collettore #3 / Down pipe #3	9773H096C1C	1
4	Collettore #4 / Down pipe #4	9773H096C1D	1
5	Tubo di raccordo 2-1 / Link pipe 2-1	9773H096C1E	1
6	Tubo di raccordo 2-1 / Link pipe 2-1	9773H096C1F	1
7	Tubo di raccordo 2-1 / Link pipe 2-1	9773H096C1G	1
8	Tubo di raccordo / Link pipe	9773H096C1H	1
9	Silenziatore / Muffler db killer 50.DK.204.0	AK-1 300	1
10	Vite M8x20 / Screw M8x20	50.73.894.1	1
11	Rondella in alluminio nera / Black aluminium washer	50.73.221.1	2
12	Staffa / Bracket	50.SS.1548.0	1
13	Rondella di sicurezza / Safety washer	50.73.604.1	2
14	Vite M8 x 16 / Screw M8 x 16	50.73.098.1	2
15	Dado M8 autobloccante / M8 locknut	50.73.1101.1	1
16	Staffa / Bracket	50.SS.1614.0	1
17	Dado M8 flangiato / Flanged nut M8	50.73.393.1	2
18	Vite M8x50 / Screw M8x50	50.73.088.1	1
19	Vite M5 x 8 / Screw M5 x 8	50.73.233.1	2
20	Rondella M5 / Washer M5	50.73.351.1	2
21	Cover in carbonio / Carbon cover	50.CR.070.0	1
22	Dado rapido M5 / M5 cage nut	50.73.674.1	2
23	Staffa / Bracket	50.73.1122.0	2
24	Fascetta / Clamp	50.73.795.1	2
25	Vite M8x50 / Screw M8x50	50.73.074.1	1
26	Tubo in gomma per molla / Rubber pipe for spring	50.73.210.1	7
27	Molla media / Mid-size spring	50.73.359.1	5
28	Molla lunga / Long spring	50.71.080.1	4

**Mandatory Catalytic Converter**  
Cod. ACC.099.A1  
Optional in H.096.LZK / L4K  
Included in H.096.KZK / K4K

Parti originali  
Original parts

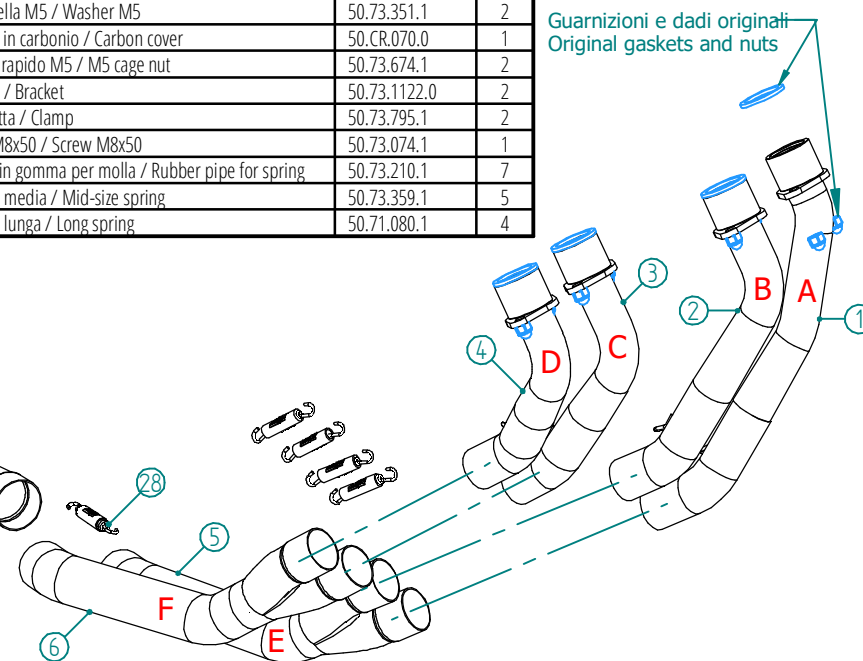
Guarnizioni e dadi originali  
Original gaskets and nuts



### OPTIONAL PART



**SWITCH-OFF KEY**  
Cod. ACC.101.0



### APPLICAZIONI / APPLICATIONS

CODICE / CODE	SILENZIATORE / MUFFLER	TUBO / PIPE	NOTE
H.096.L4K	TITANO (Coppa carbonio) / TITANIUM (Carbon cap)	INOX / ST. STEEL	CATALYTIC CONVERTER NOT INCLUDED
H.096.K4K			CATALYTIC CONVERTER INCLUDED
H.096.LZK	INOX NERO (Coppa carbonio) / STEEL BLACK (Carbon cap)	INOX / ST. STEEL	CATALYTIC CONVERTER NOT INCLUDED
H.096.KZK			CATALYTIC CONVERTER INCLUDED

# HONDA CBR 650 R / CB 650 R 2024 -->

## FOTO 1

Cavo sonda lato sinistro  
Left-side probe cable  
Câble de sonde côté gauche  
Kabel der Sonde auf der linken Seite  
Cable de sonda del lado izquierdo  
Cabo da sonda do lado esquerdo

## FOTO 2

Sganciare fascetta che regge il cavo sonda lambda  
Unhook the clamp holding the lambda probe cable  
Détacher le collier qui maintient le câble de sonde lambda  
Die Klemme lösen, die das Kabel der Lambdasonde hält  
Desenganchar la abrazadera que sujeta el cable de la sonda lambda  
Soltar a braçadeira que segura o cabo da sonda lambda

## FOTO 3

Rimuovere la fascetta  
Remove the clamp  
Retirer le collier  
Die Klemme entfernen  
Retirar la abrazadera  
Remover a braçadeira

## FOTO 4/5/6

Rimuovere la protezione della catena  
Remove the chain guard  
Retirer la protection de la chaîne  
Den Schutz der Kette entfernen  
Retirar la protección de la cadena  
Remover a proteção da corrente

## FOTO 7

Liberare il cavo dalla fascetta  
Release the cable from the clamp  
Libérer le câble du collier de serrage  
Kabel aus der Klemme lösen  
Liberar el cable de la abrazadera.  
Liberar o cabo da braçadeira

## FOTO 8/9

Rimontare la protezione della catena  
Refit the chain guard  
Remonter la protection de la chaîne  
Kettenschutz wieder anbringen  
Volver a montar la protección de la cadena.  
Remontar a proteção da corrente

## FOTO 10/11

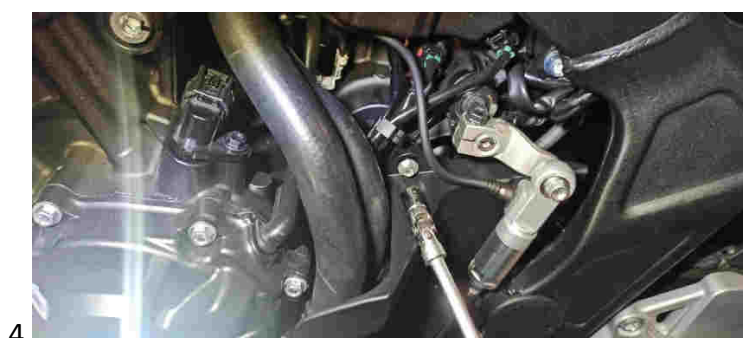
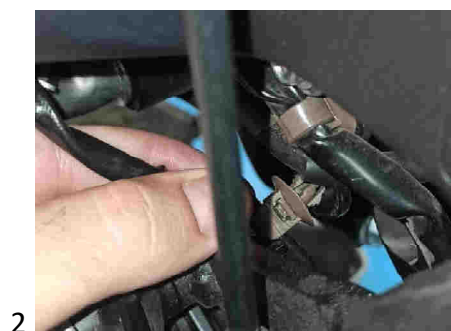
Far passare il cavo all'interno del forcellone  
Pass the cable through the swingarm  
Faire passer le câble à l'intérieur du bras oscillant  
Kabel durch die Schwinge führen  
Pasar el cable por el interior del basculante.  
Passar o cabo por dentro do braço oscilante

## FOTO 12/13

Con una fascetta in plastica fissare il cavo all'ammortizzatore  
Secure the cable to the shock absorber with a plastic clamp  
À l'aide d'un collier de serrage en plastique, fixer le câble à l'amortisseur  
Kabel mit einer Kunststoffklemme am Stoßdämpfer befestigen  
Fijar el cable al amortiguador con una abrazadera de plástico.  
Com uma braçadeira de plástico, fixar o cabo ao amortecedor

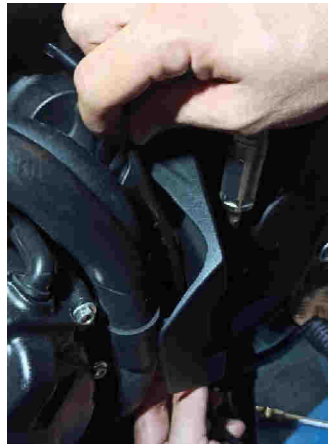
## FOTO 14

☑vvitare sonda lambda  
Screw in the lambda probe  
Visser la sonde lambda  
Lambdasonde anschrauben  
☑tornillar la sonda lambda.  
☑parafusar a sonda lambda

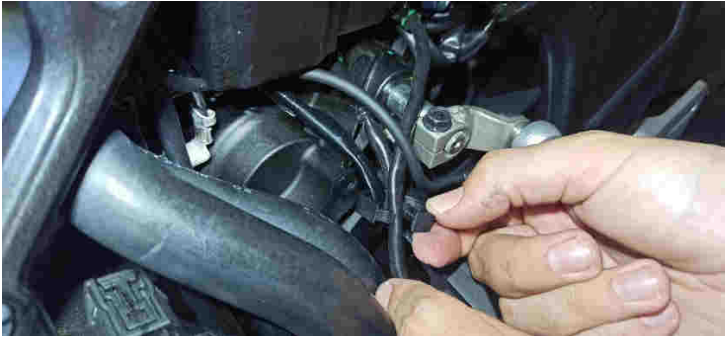




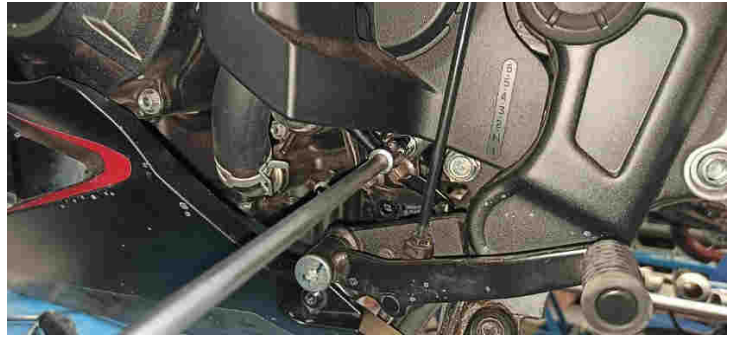
5



6



7



8



9



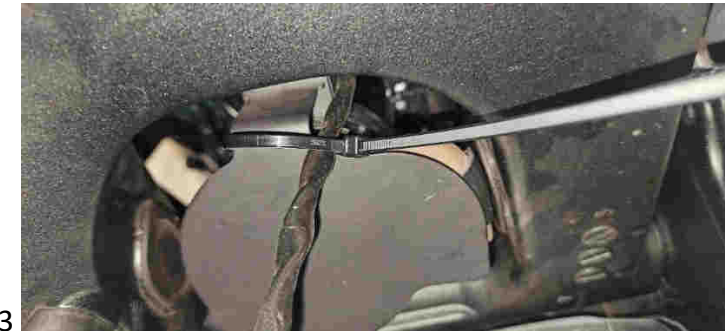
10



11



12



13



14