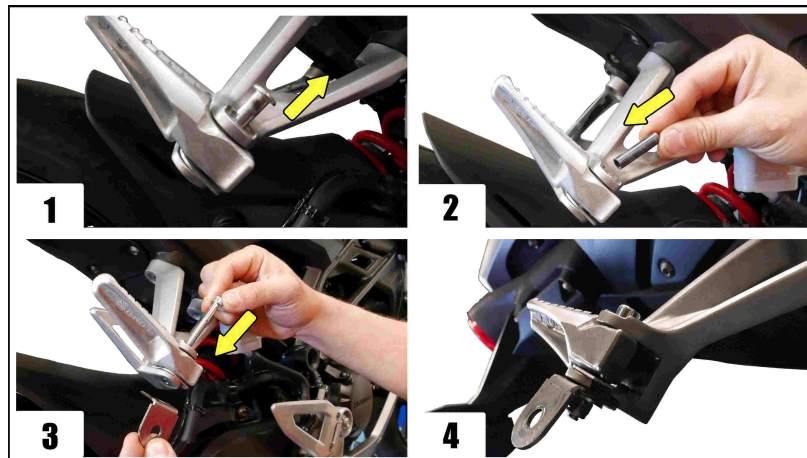
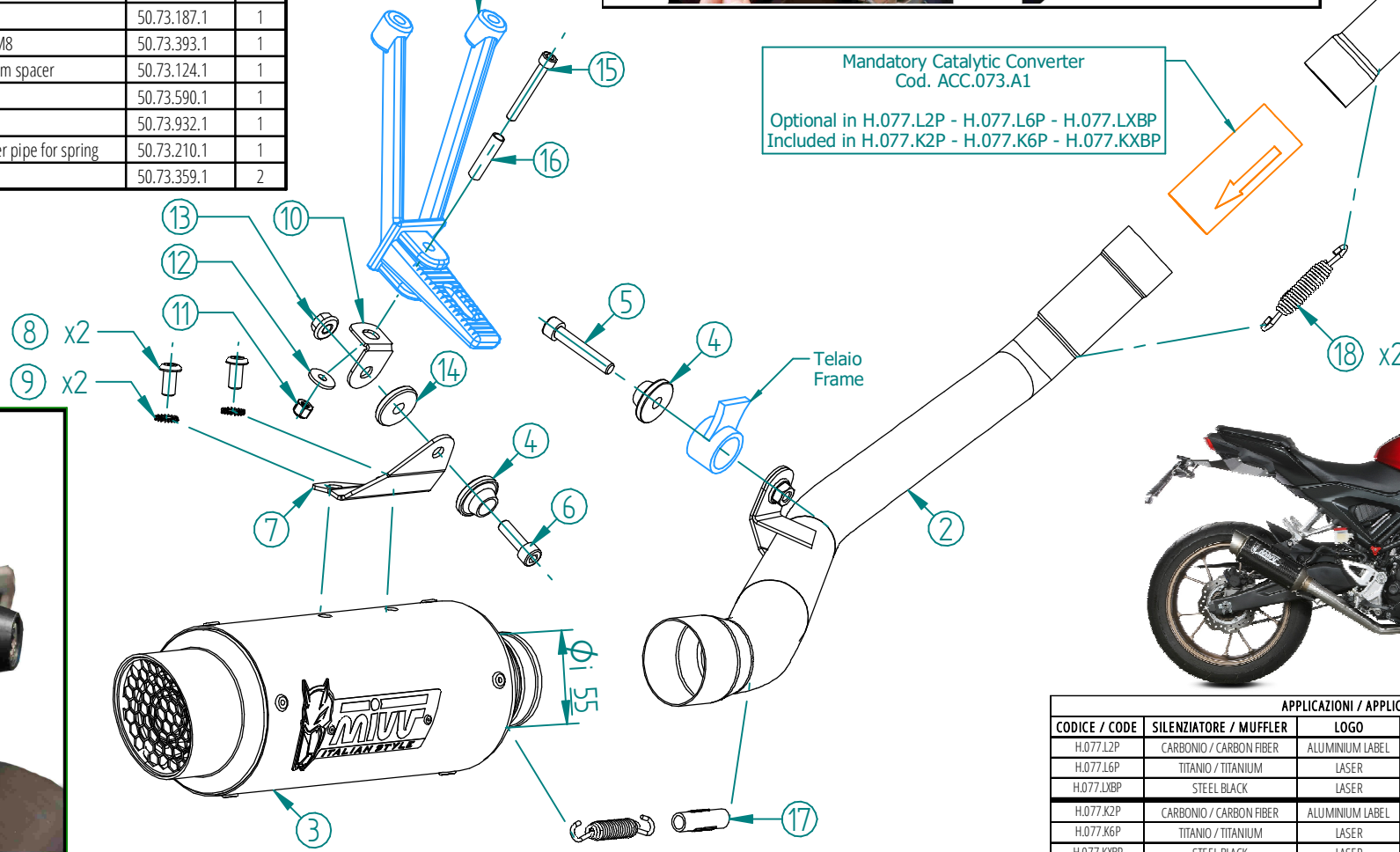


#	DESCRIPTION	PART NUMBER	QTY
1	Tubo collettore / Down pipe	9773H077S2A	1
2	Tubo di raccordo / Link pipe	9773H077S2B	1
3	Silenziatore / Muffler - dB killer 50.DK.117.0	GP PRO 220	1
4	Rondella in alluminio nera / Black aluminium washer	50.73.221.1	2
5	Vite M8x45 / Screw M8x45	50.73.602.1	1
6	Vite M8x25 / Screw M8x25	50.73.064.1	1
7	Staffa / Bracket	50.SS.1214.0	1
8	Vite M8 x 16 / Screw M8 x 16	50.73.098.1	2
9	Rondella di sicurezza / Safety washer	50.73.604.1	2
10	Staffa / Bracket	50.SS.1606.0	1
11	Dado M6 autobloccante / M6 locknut	50.73.112.1	1
12	Rondella M6 / Washer M6	50.73.187.1	1
13	Dado M8 flangiato / Flanged nut M8	50.73.393.1	1
14	Distanziale in alluminio / Aluminium spacer	50.73.124.1	1
15	Vite M6x45 / Screw M6x45	50.73.590.1	1
16	Bussola / Bush	50.73.932.1	1
17	Tubo in gomma per molla / Rubber pipe for spring	50.73.210.1	1
18	Molla media / Mid-size spring	50.73.359.1	2



Pedana originale  
Original footrest

Mandatory Catalytic Converter  
Cod. ACC.073.A1  
Optional in H.077.L2P - H.077.L6P - H.077.LXBP  
Included in H.077.K2P - H.077.K6P - H.077.KXBP



Dadi originali  
Original nuts



APPLICAZIONI / APPLICATIONS				
CODICE / CODE	SILENZIATORE / MUFFLER	LOGO	TUBO / PIPE	NOTE
H.077.L2P	CARBONIO / CARBON FIBER	ALUMINIUM LABEL	INOX / ST. STEEL	CATALYTIC CONVERTER NOT INCLUDED
H.077.L6P	TITANIO / TITANIUM	LASER		
H.077.LXBP	STEEL BLACK	LASER	INOX / ST. STEEL	CATALYTIC CONVERTER INCLUDED
H.077.K2P	CARBONIO / CARBON FIBER	ALUMINIUM LABEL		
H.077.K6P	TITANIO / TITANIUM	LASER		
H.077.KXBP	STEEL BLACK	LASER		

