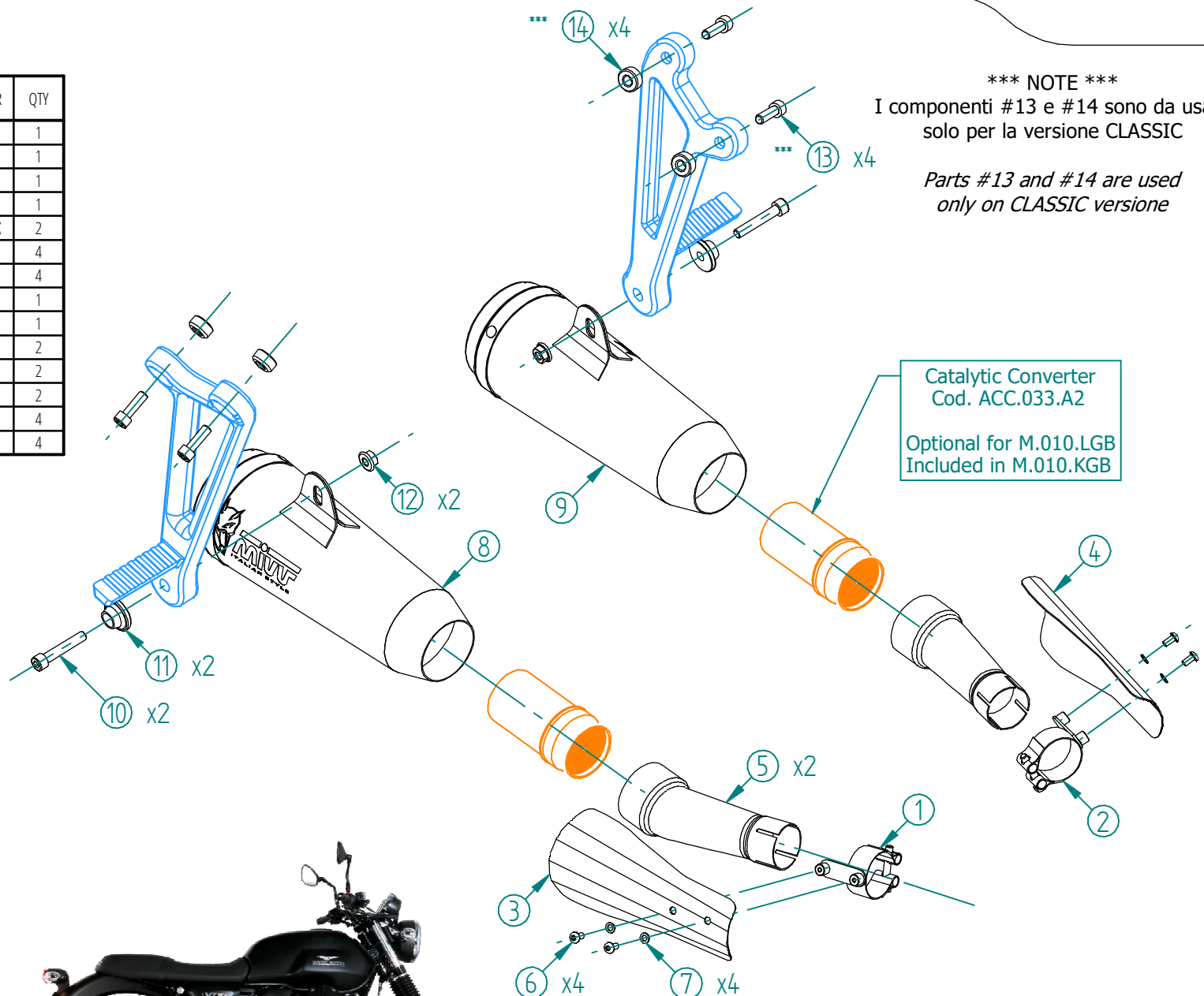


#	DESCRIPTION	PART NUMBER	QTY
1	Fascetta / Pipe clamp (Ø40/43 mm)	50.73.813.DX	1
2	Fascetta / Pipe clamp (Ø40/43 mm)	50.73.813.SX	1
3	Carter destro / Right cover	50.CR.014.DX	1
4	Carter sinistro / Left cover	50.CR.014.SX	1
5	Tubo di raccordo / Link pipe	9773M010SGX	2
6	Vite M5 x 8 / Screw M5 x 8	50.73.459.1	4
7	Rondella M5 / Washer M5	50.73.351.1	4
8	Silenziatore destro / Right muffler db killer 50.DK.108.0	GHIBLI DX	1
9	Silenziatore sinistro / Left muffler db killer 50.DK.108.0	GHIBLI SX	1
10	Vite M8x45 / Screw M8x45	50.73.602.1	2
11	Rondella in alluminio nera / Black aluminium washer	50.73.221.1	2
12	Dado M8 flangiato / Flanged nut M8	50.73.393.1	2
13	Vite M8x25 / Screw M8x25	50.73.064.1	4
14	Distanziale in alluminio / Aluminium spacer (Øe.20 Øi.8,5 h.10)	50.S5.070.1	4



APPLICAZIONI / APPLICATIONS			
CODICE / CODE	SILENZIATORE / MUFFLER	TUBO / PIPE	NOTE
M.010.LGB	STEEL BLACK	INOX / ST. STEEL	CATALYTIC CONVERTER NOT INCLUDED
M.010.KGB			CATALYTIC CONVERTER INCLUDED