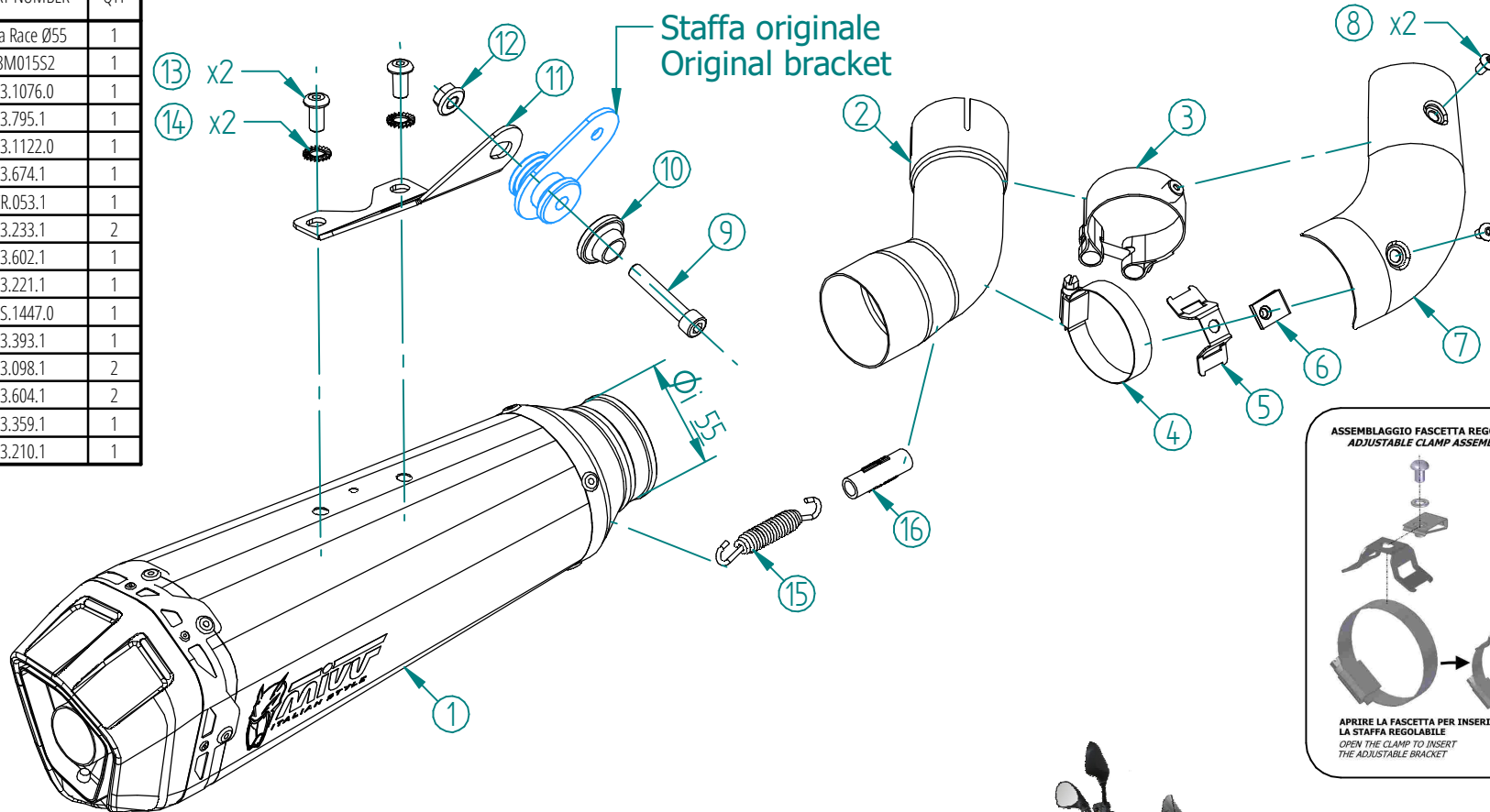
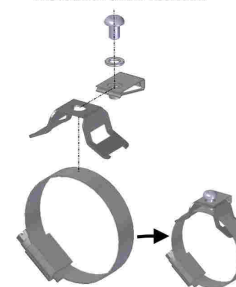


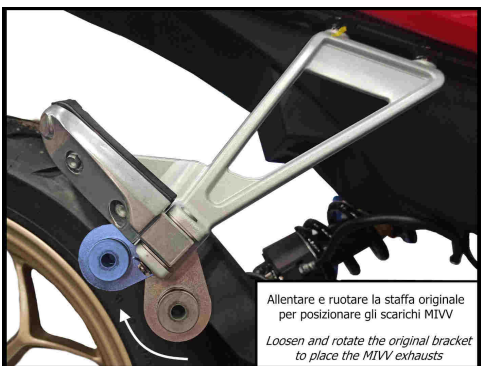
#	DESCRIPTION	PART NUMBER	QTY
1	Silenziatore / Muffler dB killer 50.DK.128.0	Delta Race Ø55	1
2	Tubo di raccordo / Link pipe	9773M01552	1
3	Fascetta con bussola / Pipe clamp with bush	50.73.1076.0	1
4	Fascetta / Clamp	50.73.795.1	1
5	Staffa / Bracket	50.73.1122.0	1
6	Dado rapido M5 / M5 cage nut	50.73.674.1	1
7	Carter in carbonio / Carbon cover	50.CR.053.1	1
8	Vite M5 x 8 / Screw M5 x 8	50.73.233.1	2
9	Vite M8x45 / Screw M8x45	50.73.602.1	1
10	Rondella in alluminio nera / Black aluminium washer	50.73.221.1	1
11	Staffa / Bracket	50.SS.1447.0	1
12	Dado M8 flangiato / Flanged nut M8	50.73.393.1	1
13	Vite M8 x 16 / Screw M8 x 16	50.73.098.1	2
14	Rondella di sicurezza / Safety washer	50.73.604.1	2
15	Molla media / Mid-size spring	50.73.359.1	1
16	Tubo in gomma per molla / Rubber pipe for spring	50.73.210.1	1



**ASSEMBLAGGIO FASCETTA REGOLABILE
ADJUSTABLE CLAMP ASSEMBLY**



**APRIRE LA FASCETTA PER INSERIRE
LA STAFFA REGOLABILE
OPEN THE CLAMP TO INSERT
THE ADJUSTABLE BRACKET**

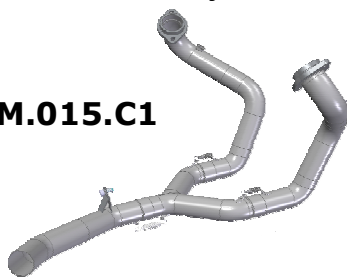


Allentare e ruotare la staffa originale per posizionare gli scarichi MIVV
Loosen and rotate the original bracket to place the MIVV exhausts

OPTIONAL PARTS

Tubo no kat - No kat pipe
Monta sia con silenzianti MIVV che con lo scarico originale
It fits both MIVV and genuine silencer

M.015.C1



APPLICAZIONI / APPLICATIONS

CODICE / CODE	SILENZIATORE / MUFFLER	TUBO / PIPE
M.015.LDRB	STEEL BLACK	INOX / ST. STEEL
M.015.LDRX	INOX / ST. STEEL	