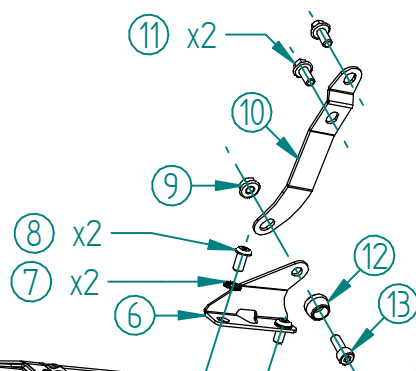
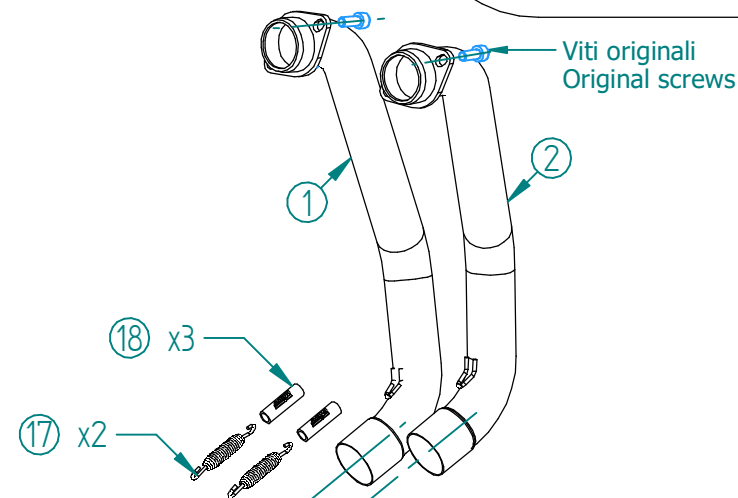
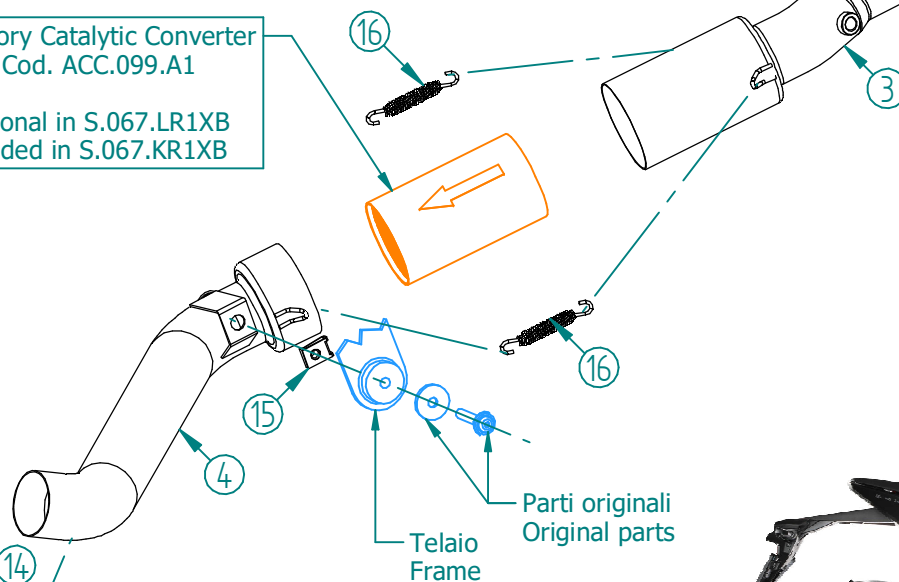


#	DESCRIPTION	PART NUMBER	QTY
1	Collettore #1 / Down pipe #1	9773S062SC5XA	1
2	Collettore #2 / Down pipe #2	9773S062SC5XB	1
3	Tubo di raccordo 2-1 / Link pipe 2-1	9773S066SC5XC	1
4	Tubo di raccordo / Link pipe	9773S067SRXD	1
5	Silenziatore / Muffler db killer 50.DK.184.0	SR-1 300	1
6	Staffa / Bracket	50.SS.1460.0	1
7	Rondella di sicurezza / Safety washer	50.73.604.1	2
8	Vite M8 x 16 / Screw M8 x 16	50.73.098.1	2
9	Dado M8 flangiato / Flanged nut M8	50.73.393.1	1
10	Staffa / Bracket	50.SS.1461.0	1
11	Vite M8x16 / Screw M8x16	50.73.006.1	2
12	Rondella in alluminio / Aluminium washer	50.73.857.1	1
13	Vite M8x20 / Screw M8x20	50.73.894.1	1
14	Molla corta / Short Spring	50.73.123.1	1
15	Dado rapido M8 / Cage nut M8	50.73.913.1	1
16	Molla lunga / Long spring	50.71.080.1	2
17	Molla media / Mid-size spring	50.73.359.1	2
18	Tubo in gomma per molla / Rubber pipe for	50.73.210.1	3



Mandatory Catalytic Converter
Cod. ACC.099.A1

Optional in S.067.LR1XB
Included in S.067.KR1XB



OPTIONAL PART

SWITCH-OFF KEY
Cod. ACC.101.0



APPLICAZIONI / APPLICATIONS			
CODICE / CODE	TUBO / PIPE	SILENZIATORE / MUFFLER	NOTE
S.067.LR1XB	INOX / ST. STEEL	INOX NERO (COPPA CARBONIO) / STEEL BLACK (CARBON CAP)	CATALYTIC CONVERTER NOT INCLUDED
S.067.KR1XB			CATALYTIC CONVERTER INCLUDED